

# MONTHLY MEMBERSHIP PROGRESS REPORT

LOCATION NEPAL

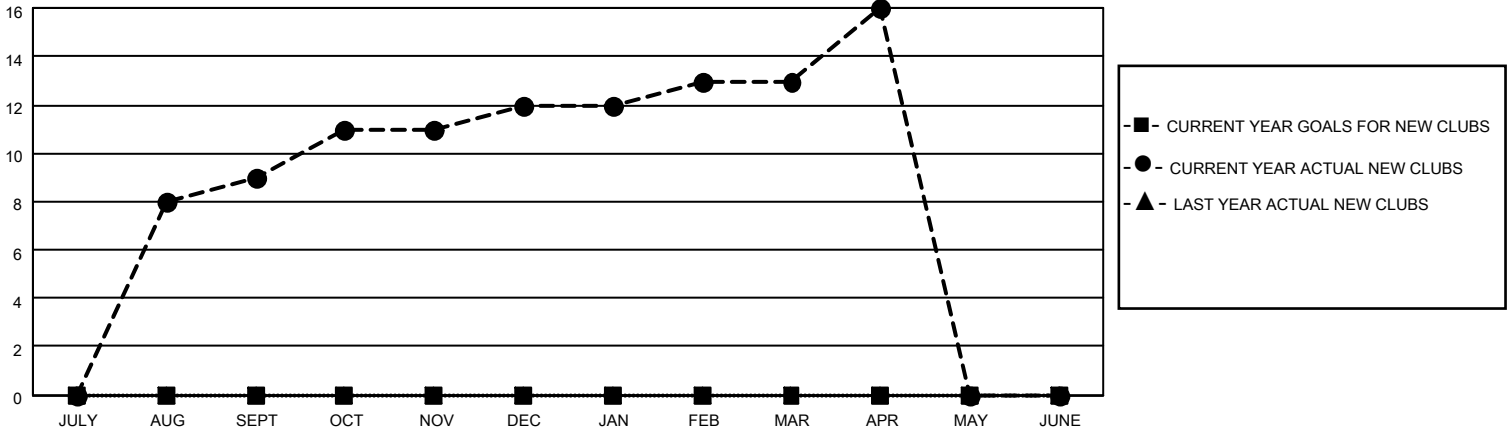
District 325 H

Results as of: 4/30/2023

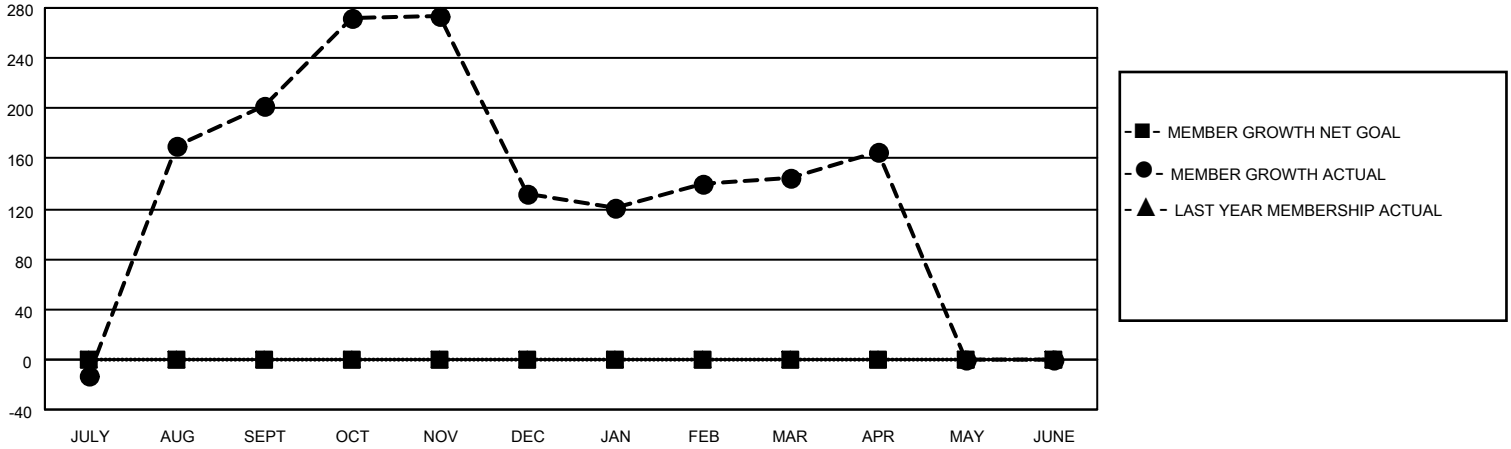
Clubs			
RESULTS FOR 2022-2023			
QUARTER	NEW CLUB GOAL	NEW CLUBS	DROPPED CLUBS
JULY/AUG/SEPT	0	9	1
OCT/NOV/DEC	0	3	4
JAN/FEB/MAR	0	1	0
APR/MAY/JUNE	0	3	0

Members			
RESULTS FOR 2022-2023			
QUARTER	MEMBER GROWTH NET GOAL	MEMBER GROWTH ACTUAL	DROPPED MEMBERS ACTUAL (including transfers)
JULY/AUG/SEPT	0	299	95
OCT/NOV/DEC	0	137	203
JAN/FEB/MAR	0	144	96
APR/MAY/JUNE	0	90	56

**GOALS AND ACTUAL NEW CLUBS CUMULATIVE**



**GOALS AND ACTUAL MEMBERS CUMULATIVE**



**DROPPED CLUBS: 5**

**63 CLUBS OF 101 ADDED 1 OR MORE NEW MEMBERS**

**GENDER DISTRIBUTION**

**DROPPED MEMBERS**

DECEASED	1
CLUB CANCELLED	138
OTHER	310
<b>TOTAL</b>	<b>449</b>

[CLICK HERE FOR CUMULATIVE MEMBERSHIP DATA](#)

MALE	1,563 (68.85%)
FEMALE	707 (31.15%)
NON BINARY	0 (0.00%)
PREFER NOT TO ANSWER	0 (0.00%)

TOTAL FAMILY UNIT MEMBERS 1,234

FAMILY MEMBERS PAYING HALF DUES 774